



DAILY BULLION REPORT

8 June 2026

BULLDEX SNAPSHOT

| Commodity | Expiry | Open | High | Low | Close | % Change |
|------------|-----------|----------|----------|----------|----------|----------|
| MCXBULLDEX | 24-Jun-26 | 37347.00 | 37347.00 | 37347.00 | 37347.00 | -1.26 |

BULLION SNAPSHOT

| Commodity | Expiry | Open | High | Low | Close | % Change |
|------------|-----------|-----------|-----------|-----------|-----------|----------|
| GOLD | 5-Aug-26 | 158598.00 | 158598.00 | 154790.00 | 155594.00 | -2.48 |
| GOLD | 5-Oct-26 | 161900.00 | 162045.00 | 158139.00 | 158970.00 | -2.43 |
| GOLDMINI | 3-Jul-26 | 156487.00 | 156666.00 | 153023.00 | 153712.00 | -2.27 |
| GOLDMINI | 5-Aug-26 | 159000.00 | 159000.00 | 154849.00 | 155549.00 | -2.40 |
| SILVER | 3-Jul-26 | 260024.00 | 261892.00 | 247286.00 | 248537.00 | -6.14 |
| SILVER | 4-Sep-26 | 267773.00 | 268978.00 | 254611.00 | 255445.00 | -6.20 |
| SILVERMINI | 30-Jun-26 | 267113.00 | 267113.00 | 253551.00 | 254631.00 | 16.53 |
| SILVERMINI | 31-Aug-26 | 272349.00 | 273355.00 | 260130.00 | 261155.00 | 34.07 |

OPEN INTEREST SNAPSHOT

| Commodity | Expiry | % Change | % Oi Change | Oi Status |
|------------|-----------|----------|-------------|------------------|
| MCXBULLDEX | 24-Jun-26 | -1.26 | 0.00 | Long Liquidation |
| MCXBULLDEX | 29-Jul-26 | 0.00 | 0.00 | Long Liquidation |
| GOLD | 5-Aug-26 | -2.48 | 5.97 | Fresh Selling |
| GOLD | 5-Oct-26 | -2.43 | 15.34 | Fresh Selling |
| GOLDMINI | 3-Jul-26 | -2.27 | 5.74 | Fresh Selling |
| GOLDMINI | 5-Aug-26 | -2.40 | -5.72 | Long Liquidation |
| SILVER | 3-Jul-26 | -6.14 | 4.73 | Fresh Selling |
| SILVER | 4-Sep-26 | -6.20 | 24.50 | Fresh Selling |
| SILVERMINI | 30-Jun-26 | -5.48 | 16.53 | Fresh Selling |
| SILVERMINI | 31-Aug-26 | -5.50 | 34.07 | Fresh Selling |

INTERNATIONAL BULLION SNAPSHOT

| Commodity | Open | High | Low | Close | % Change |
|-----------|---------|---------|---------|---------|----------|
| Gold \$ | 4343.19 | 4353.52 | 4339.53 | 4340.13 | -0.09 |
| Silver \$ | 68.21 | 68.49 | 67.97 | 68.13 | -0.10 |

RATIOS

| Ratio | Price | Ratio | Price | Ratio | Price |
|-----------------------|-------|-------------------------|--------|-------------------------|--------|
| Gold / Silver Ratio | 62.60 | Silver / Crudeoil Ratio | 28.85 | Gold / Copper Ratio | 116.45 |
| Gold / Crudeoil Ratio | 18.06 | Silver / Copper Ratio | 186.01 | Crudeoil / Copper Ratio | 6.45 |

Important levels for Jewellery/Bullion Dealers



| Booking Price for Sellers | Booking Price for Buyers |
|---------------------------|--------------------------|
| 155904.00 | 155284.00 |
| 156114.00 | 155074.00 |



| Booking Price for Sellers | Booking Price for Buyers |
|---------------------------|--------------------------|
| 249257.00 | 247817.00 |
| 250017.00 | 247057.00 |



| Booking Price for Sellers | Booking Price for Buyers |
|---------------------------|--------------------------|
| 95.50 | 95.14 |
| 95.72 | 94.92 |

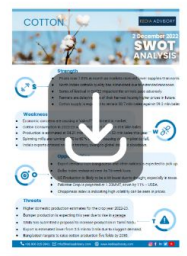
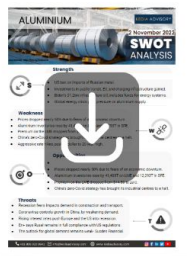


| Booking Price for Sellers | Booking Price for Buyers |
|---------------------------|--------------------------|
| 4352.90 | 4327.60 |
| 4365.80 | 4314.70 |



| Booking Price for Sellers | Booking Price for Buyers |
|---------------------------|--------------------------|
| 68.54 | 67.72 |
| 68.85 | 67.41 |

Click here for download Kedia Advisory **Special Research Reports**



Technical Snapshot



SELL GOLD AUG @ 156500 SL 157500 TGT 155000-154000. MCX

Observations

Gold trading range for the day is 152515-160135.

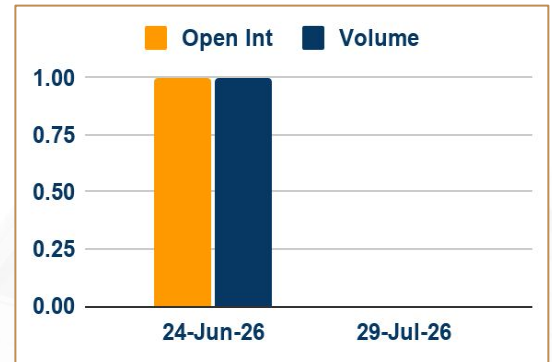
Gold fell amid a stronger-than-expected US jobs report and ongoing Middle East uncertainty kept inflation and interest rate concerns.

The May jobs report revealed the US economy added 172,000 jobs, significantly above the forecasted 85,000.

White House National Economic Council director Hassett said the Federal Reserve should not raise rates and there is room to cut.

Global gold ETFs recorded net outflows in May, with Asia and North America leading the withdrawals - WGC

OI & Volume



Spread

| | |
|------------------|---------|
| GOLD OCT-AUG | 3376.00 |
| GOLDMINI AUG-JUL | 1837.00 |

Trading Levels

| Commodity | Expiry | Close | R2 | R1 | PP | S1 | S2 |
|-----------|----------|-----------|-----------|-----------|-----------|-----------|-----------|
| GOLD | 5-Aug-26 | 155594.00 | 160135.00 | 157860.00 | 156325.00 | 154050.00 | 152515.00 |
| GOLD | 5-Oct-26 | 158970.00 | 163625.00 | 161300.00 | 159720.00 | 157395.00 | 155815.00 |
| GOLDMINI | 3-Jul-26 | 153712.00 | 158105.00 | 155905.00 | 154465.00 | 152265.00 | 150825.00 |
| GOLDMINI | 5-Aug-26 | 155549.00 | 160615.00 | 158080.00 | 156465.00 | 153930.00 | 152315.00 |
| Gold \$ | | 4340.13 | 4357.99 | 4348.47 | 4344.00 | 4334.48 | 4330.01 |



FOLLOW US



Technical Snapshot



SELL SILVER JUL @ 250500 SL 253000 TGT 247000-245000. MCX

Observations

Silver trading range for the day is 237965-267175.

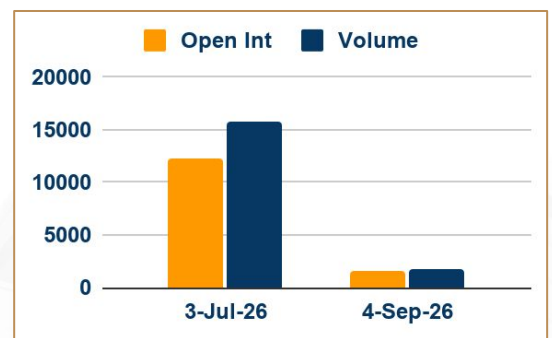
Silver fell as dollar edged up above 99.60 as a resilient labor market reinforced Fed may consider further rate increases.

US economy added 172K jobs in May 2026, well above forecasts of 85K, and following an upwardly revised 179K gain in the previous month.

White House says U.S. jobs data were very strong.

President Trump said peace negotiations were nearing their final stage and appeared reluctant to escalate tensions with Iran.

OI & Volume



Spread

| | |
|--------------------|---------|
| SILVER SEP-JUL | 6908.00 |
| SILVERMINI AUG-JUN | 6524.00 |

Trading Levels

| Commodity | Expiry | Close | R2 | R1 | PP | S1 | S2 |
|------------|-----------|-----------|-----------|-----------|-----------|-----------|-----------|
| SILVER | 3-Jul-26 | 248537.00 | 267175.00 | 257855.00 | 252570.00 | 243250.00 | 237965.00 |
| SILVER | 4-Sep-26 | 255445.00 | 274050.00 | 264750.00 | 259680.00 | 250380.00 | 245310.00 |
| SILVERMINI | 30-Jun-26 | 254631.00 | 271995.00 | 263310.00 | 258430.00 | 249745.00 | 244865.00 |
| SILVERMINI | 31-Aug-26 | 261155.00 | 278105.00 | 269630.00 | 264880.00 | 256405.00 | 251655.00 |
| Silver \$ | | 68.13 | 68.72 | 68.43 | 68.20 | 67.91 | 67.68 |

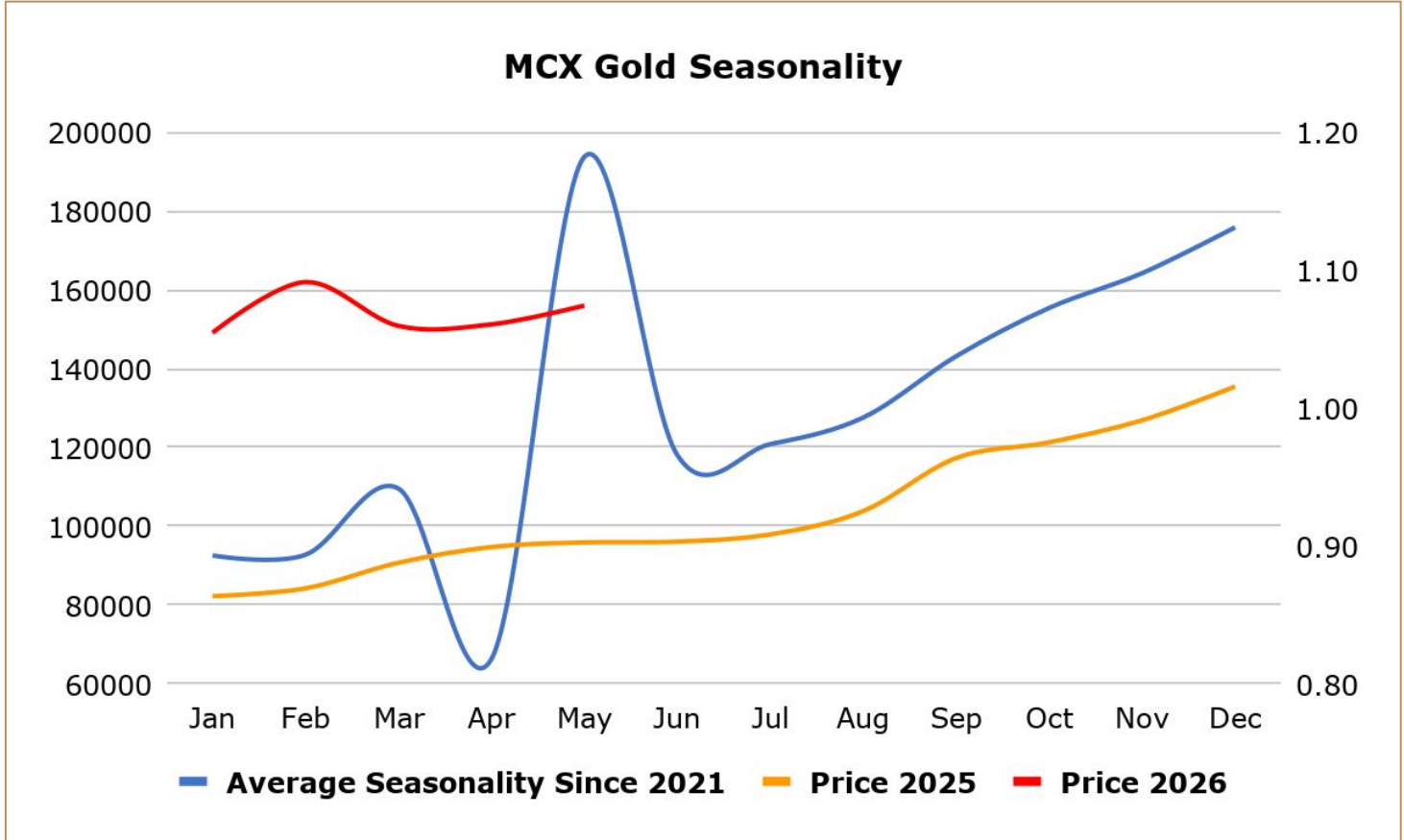
Gold prices fell as a stronger-than-expected US jobs report and ongoing Middle East uncertainty kept inflation and interest rate concerns in focus. White House National Economic Council director Hasset said the Federal Reserve should not raise rates and there is room to cut; the Fed has fallen behind the curve and substantial scope for rate reductions remains. The May jobs report revealed the US economy added 172,000 jobs, significantly above the forecasted 85,000, while the unemployment rate held steady at 4.3% and annual wage growth moderated to 3.4%, in line with expectations. This prompted investors to increase bets on a Federal Reserve interest rate hike, with markets now pricing in a quarter-point increase by year-end. Meanwhile, investors closely monitored developments in the Middle East, where US President Donald Trump stated that peace negotiations were nearing their final stage.

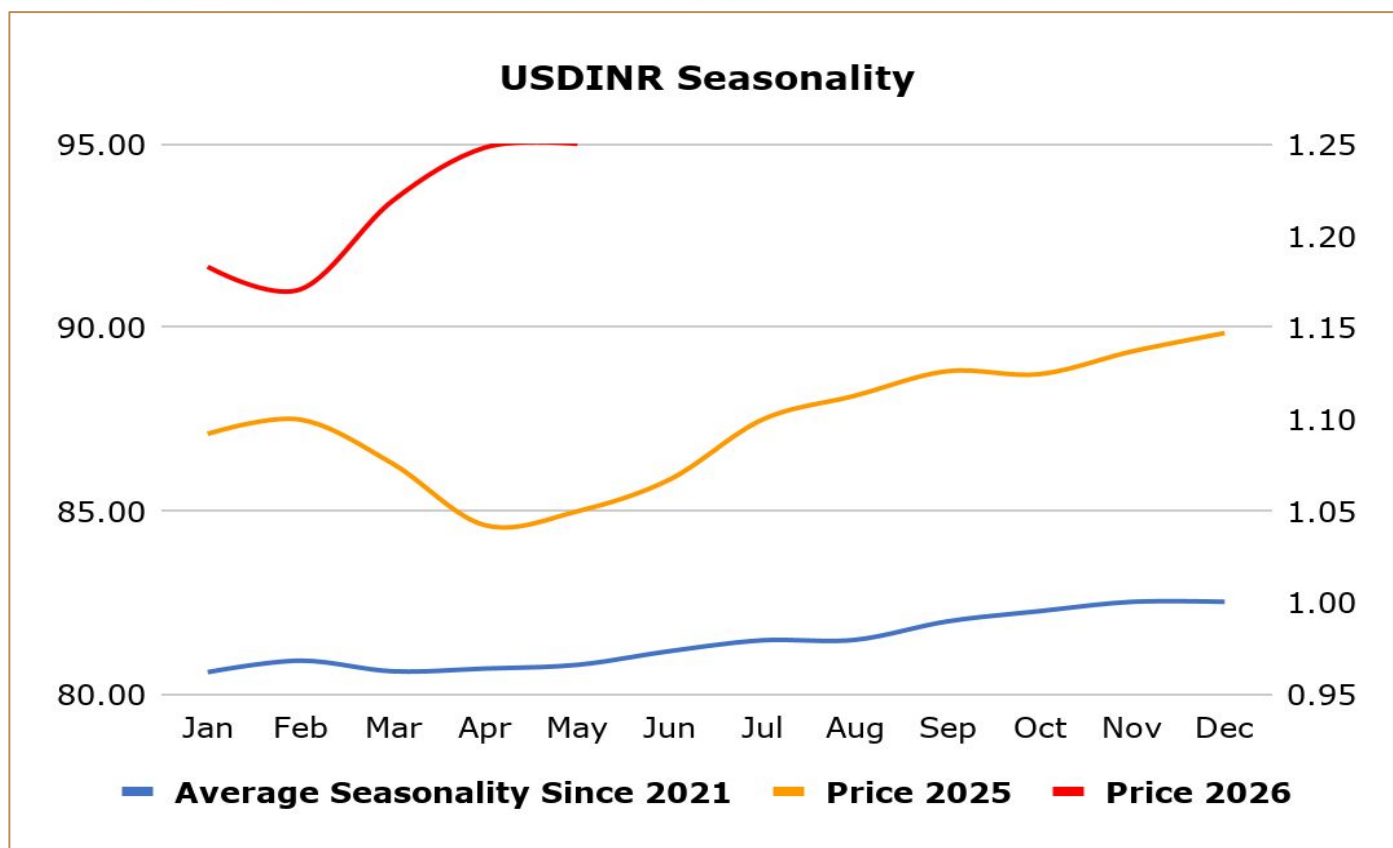
India gold demand subdued on buyer caution amid volatile prices - Gold demand was subdued in India as buyers stayed on the sidelines due to volatile overseas prices, while premiums in China eased slightly. Dealers quoted discounts of up to \$87 an ounce over official domestic prices, down from last week's discounts of up to \$106 an ounce. India's physically backed gold exchange-traded funds (ETFs) recorded their first net monthly outflow in a year in May, as investors booked profits following a sharp rise in prices triggered by higher import duties. In top consumer China, bullion traded at premiums of \$7 to \$10 an ounce over the global benchmark price, compared to premiums of \$9 to \$12 last week. In Hong Kong, gold traded at par to premiums of \$2, while in Japan, gold was sold at a discount of \$0.25. In Singapore, gold was sold at a discount of \$0.50 to a premium of \$3.

Swiss gold exports drop 20% in April as deliveries to UK fall - Gold exports from Switzerland in April fell 20% from the previous month as shipments to Britain and China slowed, offsetting higher deliveries to India and Hong Kong, Swiss customs data showed. The world's biggest bullion refining and transit hub's deliveries to the UK fell to 35.5 metric tons from 57.6 tons in March. Britain is home to the world's largest over-the-counter gold trading hub. Supplies to China, a major bullion consumer, eased by 19% to 30.5 tons while shipments to India climbed to 6.5 tons from 3.5 tons in March.

China's April net gold imports via Hong Kong rise 81.2% from March - China's net gold imports via Hong Kong rose 81.2% in April from the previous month, Hong Kong Census and Statistics Department data showed. The world's top gold consumer imported a net 86.715 metric tons in April, up from 47.866 tons in March, and marked its 13th straight monthly increase, the data showed. The Hong Kong data may not provide a complete picture of Chinese purchases because gold is also imported via Shanghai and Beijing. China's bullion buying patterns can influence global trends and markets. China's total gold imports via Hong Kong stood at 99.327 tons in April, up around 24.8% from March's 79.576 tons. Earlier this month, data from the People's Bank of China showed the central bank loaded up on gold for an 18th straight month in April. The country's gold reserves have added up to 74.64 million fine troy ounces by the end of April, versus the previous month's 74.38 million.

India raises gold and silver tariffs to 15% to curb imports, support rupee - India has raised import tariffs on gold and silver to 15% from 6%, government orders said, as part of efforts to curb overseas purchases of the metals and ease pressure on the country's foreign exchange reserves. The higher duties could dampen demand in the world's second-largest consumer of precious metals, although they may help narrow India's trade deficit and support the rupee, one of Asia's worst-performing currencies. However, industry officials warned higher import taxes could revive smuggling, which had eased after India cut tariffs in mid-2024. The government has imposed a 10% basic customs duty and a 5% Agriculture Infrastructure and Development Cess (AIDC) on gold and silver imports, taking the effective import tax to 15% from 6%. Inflows into India's gold exchange-traded funds (ETFs) surged 186% year-on-year in the March quarter to a record 20 metric tons, the World Gold Council said last month.





Weekly Economic Data

| Date | Curr. | Data |
|--------|-------|-----------------------------------|
| Jun 8 | EUR | German Factory Orders m/m |
| Jun 8 | EUR | Sentix Investor Confidence |
| Jun 9 | EUR | German Industrial Production m/m |
| Jun 9 | EUR | German Trade Balance |
| Jun 9 | USD | NFIB Small Business Index |
| Jun 9 | USD | ADP Weekly Employment Change |
| Jun 9 | USD | Trade Balance |
| Jun 9 | USD | Existing Home Sales |
| Jun 9 | USD | Final Wholesale Inventories m/m |
| Jun 10 | EUR | Italian Industrial Production m/m |
| Jun 10 | USD | Core CPI m/m |
| Jun 10 | USD | Core CPI y/y |
| Jun 10 | USD | CPI m/m |

| Date | Curr. | Data |
|--------|-------|---------------------------|
| Jun 10 | USD | 10-y Bond Auction |
| Jun 10 | USD | Federal Budget Balance |
| Jun 11 | EUR | German WPI m/m |
| Jun 11 | EUR | Main Refinancing Rate |
| Jun 11 | EUR | Monetary Policy Statement |
| Jun 11 | USD | Core PPI m/m |
| Jun 11 | USD | PPI m/m |
| Jun 11 | USD | Unemployment Claims |
| Jun 11 | EUR | ECB Press Conference |
| Jun 11 | USD | Natural Gas Storage |
| Jun 11 | USD | 30-y Bond Auction |
| Jun 12 | EUR | German Final CPI m/m |
| Jun 12 | EUR | French Final CPI m/m |

Stay Ahead in Markets with Kedia Advisory



Get Live Commodity & Equity Market Updates backed by in-depth research, data-driven insights, and expert analysis.

Why Kedia Advisory

-  Real-time market updates
-  Key levels & trend direction
-  Research-based market views
-  Trusted by active traders & investors

Visit: Kedia Advisory Website

www.kediaadvisory.com

CLICK HERE 

SCAN ME



Kedia Stocks and Commodities Research Pvt Ltd

SEBI REGISTRATION NUMBER : INH000006156

Aadinath Commercial, Opp. Mumbai University, Vasant Valley Road, Khadakpada, Kalyan West

Investment in securities market are subject to market risks, read all the Related documents carefully before investing.



**Scan the QR to
connect with us**

**KEDIA ADVISORY**

KEDIA STOCKS & COMMODITIES RESEARCH PVT LTD.

Mumbai. INDIA.

For more details, please contact Mobile: +91 9619551022

Email: info@kediaadvisory.com

SEBI REGISTRATION NUMBER - INH000006156

For more information or to subscribe for monthly updates

Visit www.kediaadvisory.com

This Report is prepared and distributed by Kedia Stocks & Commodities Research Pvt Ltd. for information purposes only. The recommendations, if any, made herein are expressions of views and/or opinions and should not be deemed or construed to be neither advice for the purpose of purchase or sale through KSCRPL nor any solicitation or offering of any investment /trading opportunity. These information/opinions/ views are not meant to serve as a professional investment guide for the readers. No action is solicited based upon the information provided herein. Recipients of this Report should rely on information/data arising out of their own investigations. Readers are advised to seek independent professional advice and arrive at an informed trading/investment decision before executing any trades or making any investments. This Report has been prepared on the basis of publicly available information, internally developed data and other sources believed by KSCRPL to be reliable. KSCRPL or its directors, employees, affiliates or representatives do not assume any responsibility for or warrant the accuracy, completeness, adequacy and reliability of such information/opinions/ views. While due care has been taken to ensure that the disclosures and opinions given are fair and reasonable, none of the directors, employees, affiliates or representatives of KSCRPL shall be liable for any direct, indirect, special, incidental, consequential, punitive or exemplary damages, including lost profits arising in any way whatsoever from the information/opinions/views contained in this Report. The possession, circulation and/or distribution of this Report may be restricted or regulated in certain jurisdictions by appropriate laws. No action has been or will be taken by KSCRPL in any jurisdiction (other than India), where any action for such purpose (s) is required. Accordingly, this Report shall not be possessed, circulated and/ or distributed in any such country or jurisdiction unless such action is in compliance with all applicable laws and regulations of such country or jurisdiction. KSCRPL requires such a recipient to inform himself about and to observe any restrictions at his own expense, without any liability to KSCRPL. Any dispute arising out of this Report shall be subject to the exclusive jurisdiction of the Courts in India.